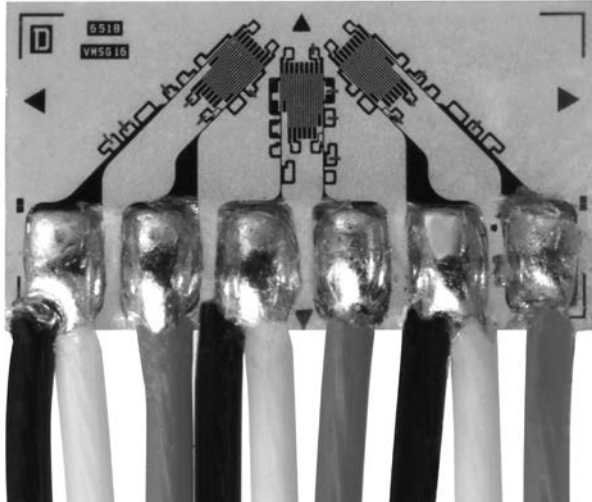




General Purpose Strain Gages – Rectangular Rosette

GAGE PATTERN DATA - BASED ON ADVANCED SENSORS TECHNOLOGY



 actual size

GAGE DESIGNATION	RESISTANCE (OHMS)	OPTIONS AVAILABLE
See Note 1		
C5K-XX-S5198-350/33F C5K-XX-S5198-350/39F	350 ± 0.5% 350 ± 0.5%	
DESCRIPTION		 RoHS COMPLIANT
Planar, 0°-45°-90° rosette for use in applications involving limited gaging areas or steep strain gradients.		

GAGE DIMENSIONS		Legend					
		ES = Each Section	CP = Complete Pattern	<table border="1"> <tr><td>inch</td></tr> <tr><td>millimeter</td></tr> </table>		inch	millimeter
inch							
millimeter							
		S = Section (S1 = Section 1)	M = Matrix				
Gage Length	Overall Length	Grid Width	Overall Width	Matrix Length	Matrix Width		
0.014 ES	0.071 CP	0.012 ES	0.143 CP	0.08	0.15		
0.36 ES	1.81 CP	0.30 ES	3.63 CP	2.2	3.9		

GAGE SERIES DATA — See Gage Series datasheet for complete specifications

Series	Description	Strain Range	Temperature Range
C5K	Encapsulated Karma gages with pre-attached high-performance Teflon®-insulated thin, flexible cables, each consisting of 3 twisted wires. One cable per gage grid. Length selections: 33F = 3 cables, 3 ft long; 39F = 3 cables, 9 ft long.	±1.5%	-100° to +400°F (-75° to +205°C); in short-term, exposure limit is +500°F (+260°C)

Note 1: Insert desired S-T-C number in spaces marked XX.

Teflon is a Registered Trademark of DuPont.